

Proposed Industrial Development

345-367 Bringelly Rd & 17 Eastwood Rd
Leppington, NSW

Architectural Development Application - Stage 2

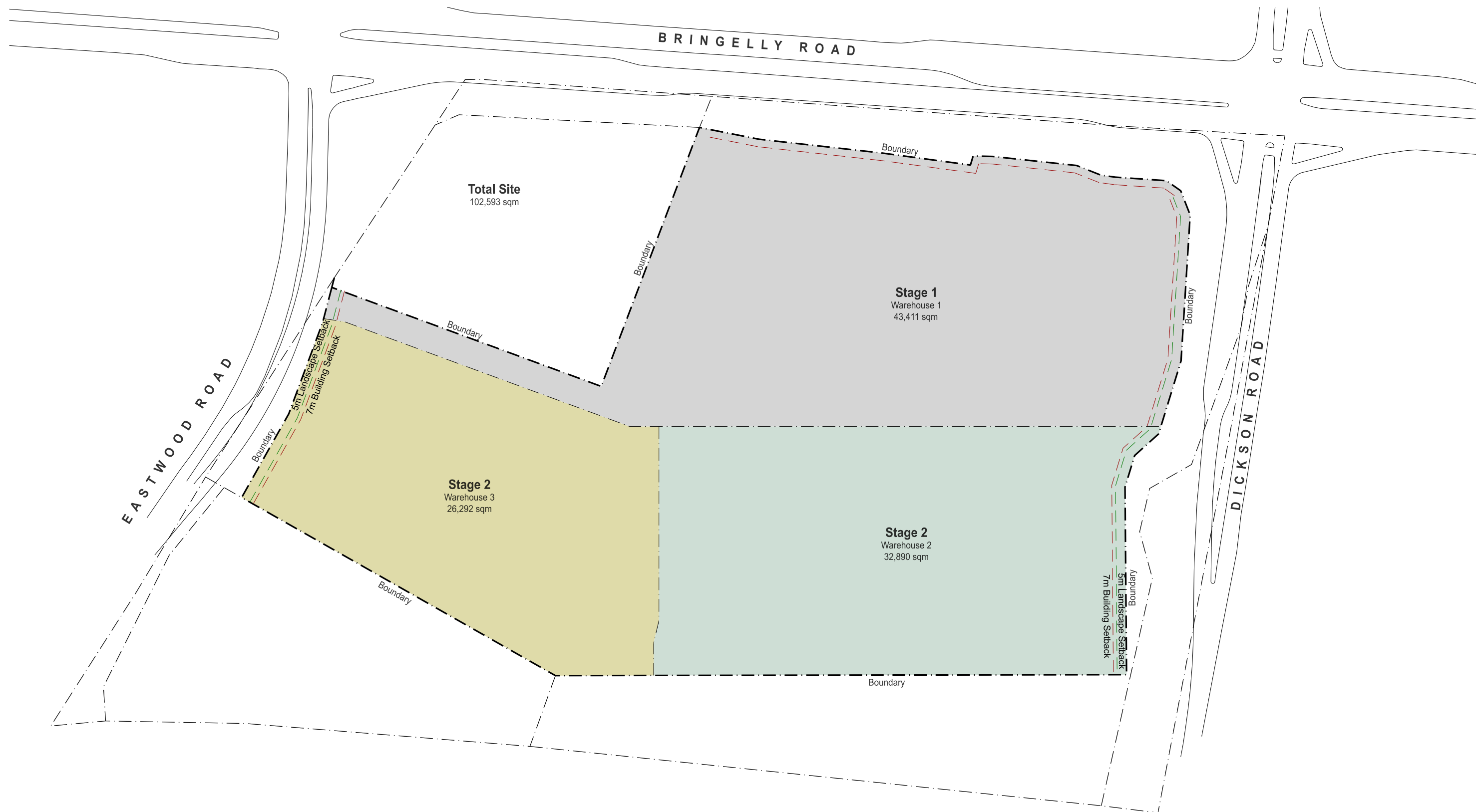
Drawing List		
Drawing No.	Sheet Name	Scale (A3 / A1)
DA000	Cover Sheet	1:5000 / 1:2500
DA101	Stage 2 Site Plan	1:2000 / 1:1000
DA102	NDA Plan	1:2000 / 1:1000
DA200	Warehouse 2 Plan	1:1000 / 1:500
DA201	Warehouse 2 Roof Plan	1:1000 / 1:500
DA202	Warehouse 2 Office 2A Plans	1:200 / 1:100
DA210	Warehouse 2 Elevations	1:750 / 1:375
DA211	Warehouse 2 Sections	1:500 / 1:250
DA215	Warehouse 2 Office 2A Elevations	1:200 / 1:100
DA300	Warehouse 3 Plan	1:750 / 1:375
DA301	Warehouse 3 Roof Plan	1:750 / 1:375
DA302	Warehouse 3 Office 3A Plan	1:200 / 1:100
DA310	Warehouse 3 Elevations	1:750 / 1:375
DA311	Warehouse 3 Sections	1:500 / 1:250
DA315	Warehouse 3 Office 3A Elevations	1:200 / 1:100
DA400	Signage Details	1:50 / 1:25





LEGEND

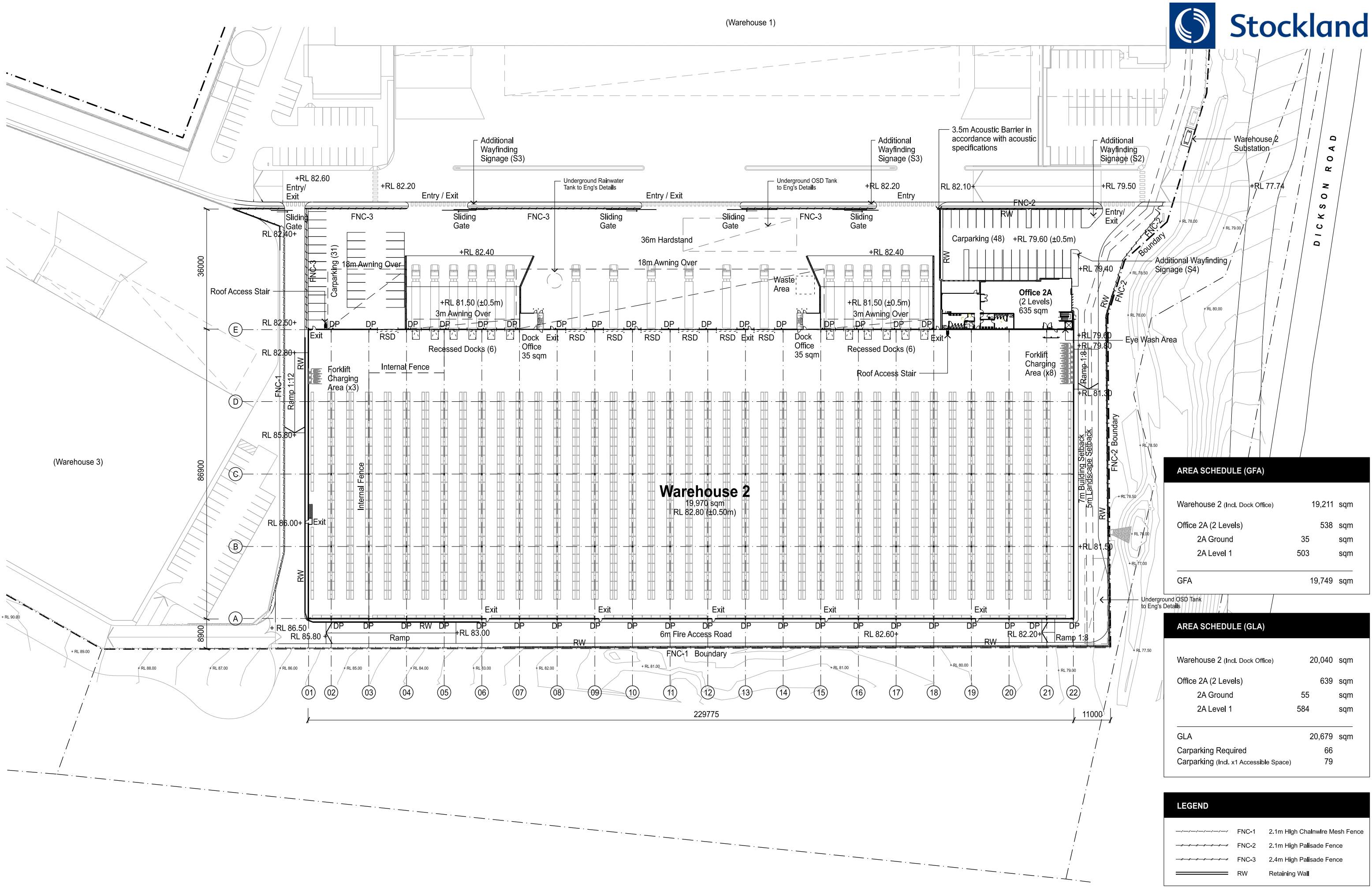
	FNC-1	2.1m High Chainwire Mesh Fence
	FNC-2	2.1m High Pallsade Fence
	FNC-3	2.4m High Pallsade Fence
	RW	Retaining Wall



AREA SCHEDULE

Total Site Area	102,593 sqm
Total NDA	102,593 sqm
Stage 1 - WH1 NDA	43,411 sqm
Stage 2 - WH2 NDA	32,890 sqm
Stage 2 - WH3 NDA	26,292 sqm

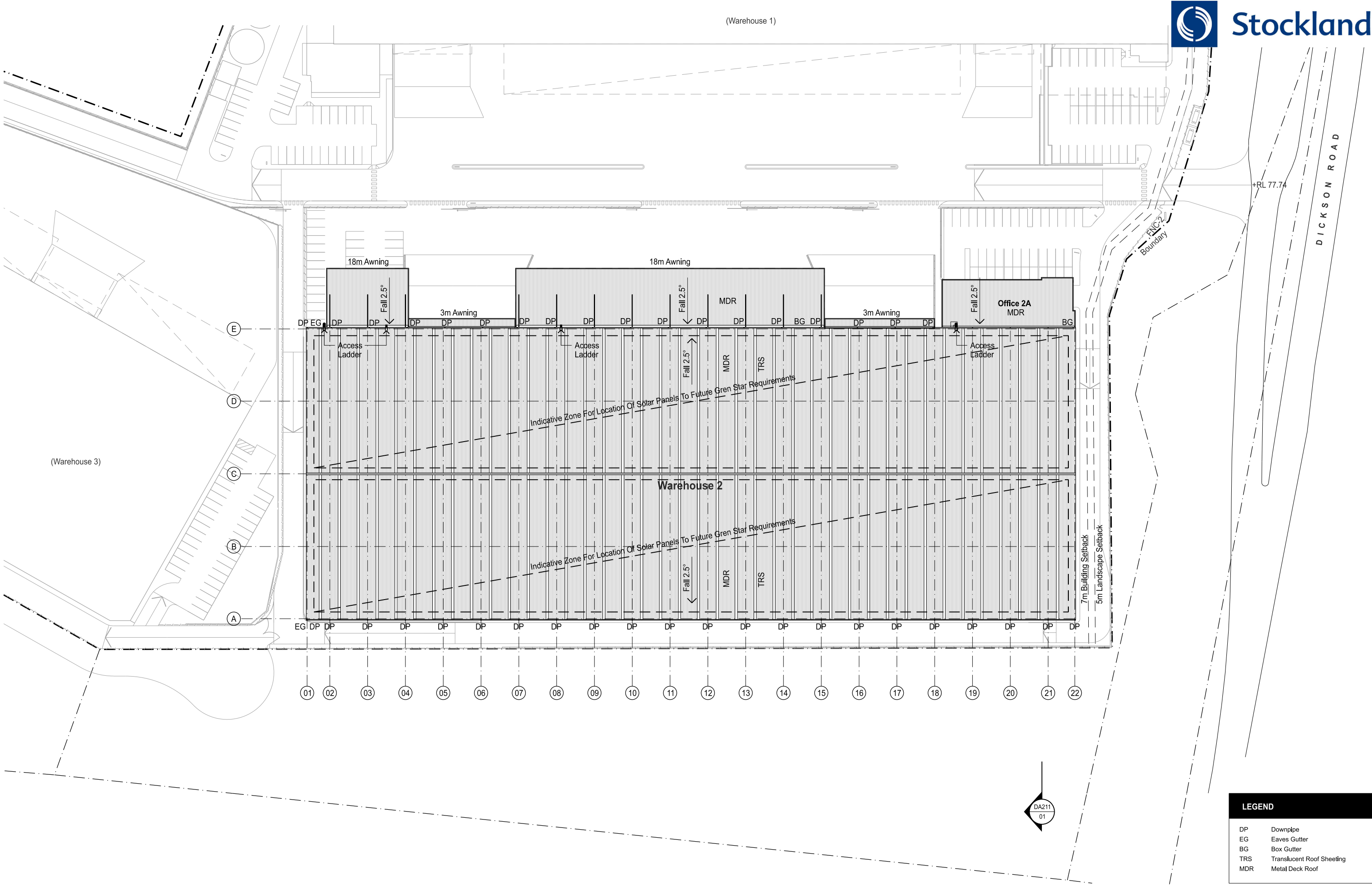




AREA SCHEDULE (GFA)	
Warehouse 2 (Incl. Dock Office)	19,211 sqm
Office 2A (2 Levels)	538 sqm
2A Ground	35 sqm
2A Level 1	503 sqm
GFA	19,749 sqm

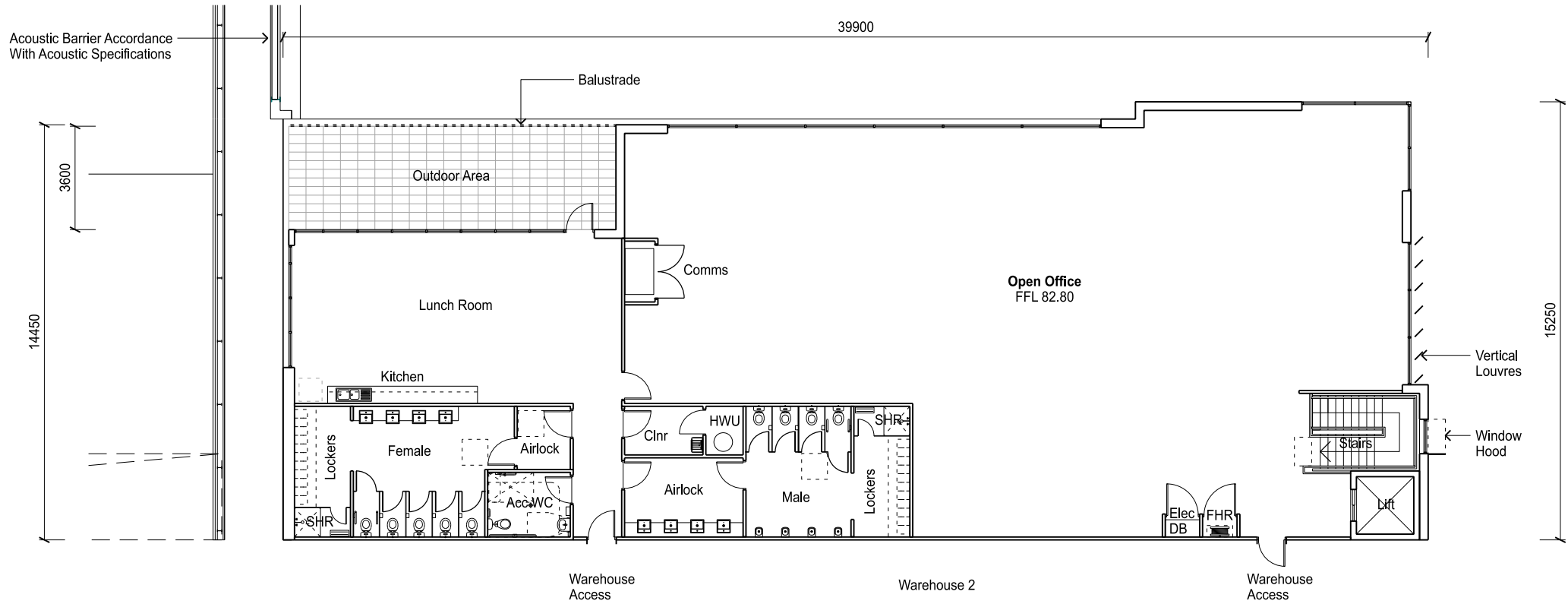
AREA SCHEDULE (GLA)	
Warehouse 2 (Incl. Dock Office)	20,040 sqm
Office 2A (2 Levels)	639 sqm
2A Ground	55 sqm
2A Level 1	584 sqm
GLA	20,679 sqm
Carparking Required	66
Carparking (Incl. x1 Accessible Space)	79

LEGEND	
	FNC-1 2.1m High Chainwire Mesh Fence
	FNC-2 2.1m High Palisade Fence
	FNC-3 2.4m High Palisade Fence
	RW Retaining Wall

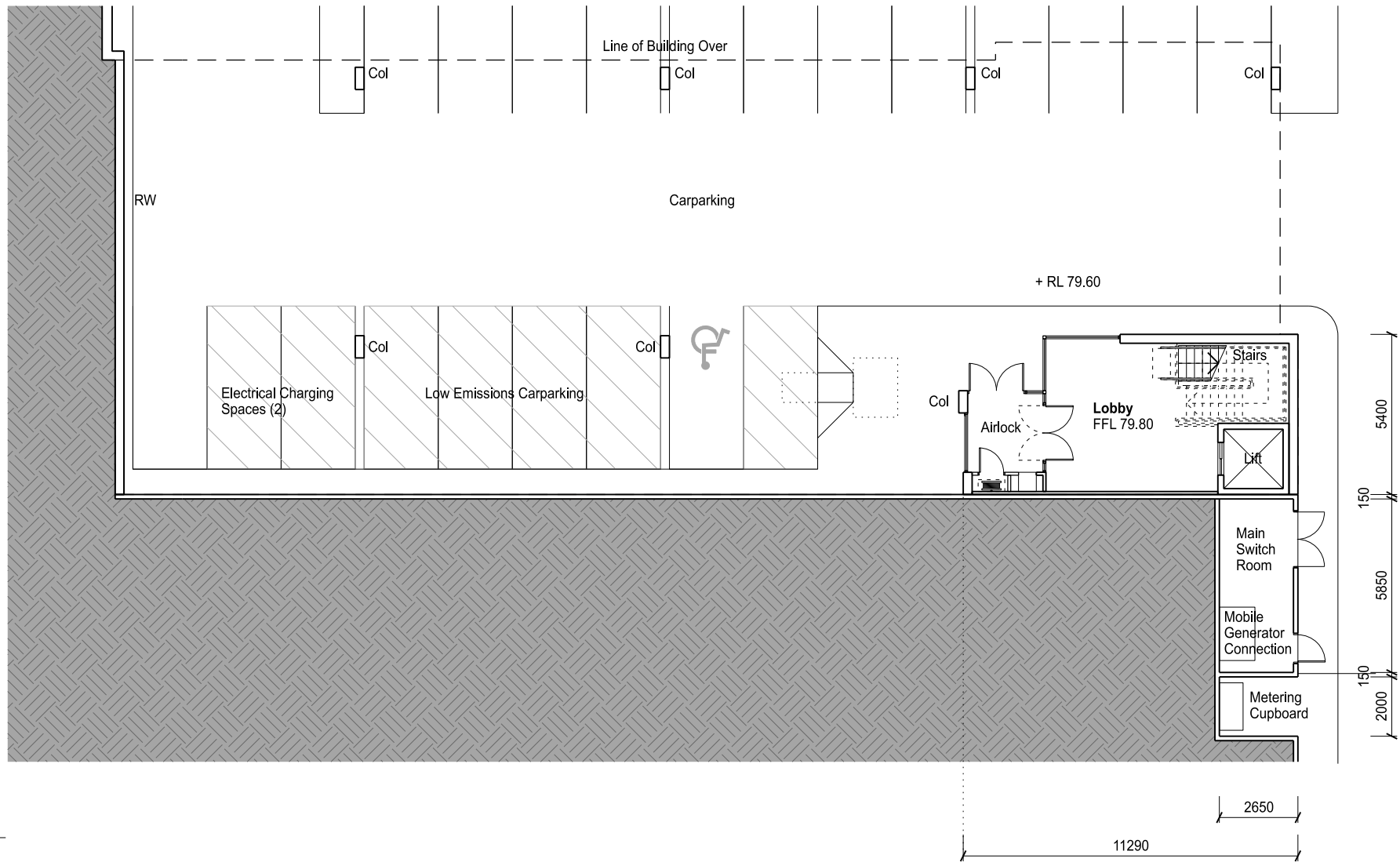


LEGEND

- DP Downpipe
- EG Eaves Gutter
- BG Box Gutter
- TRS Translucent Roof Sheet
- MDR Metal Deck Roof



01
DA202
Office 2A - Level 1



02
DA202
Office 2A - Ground

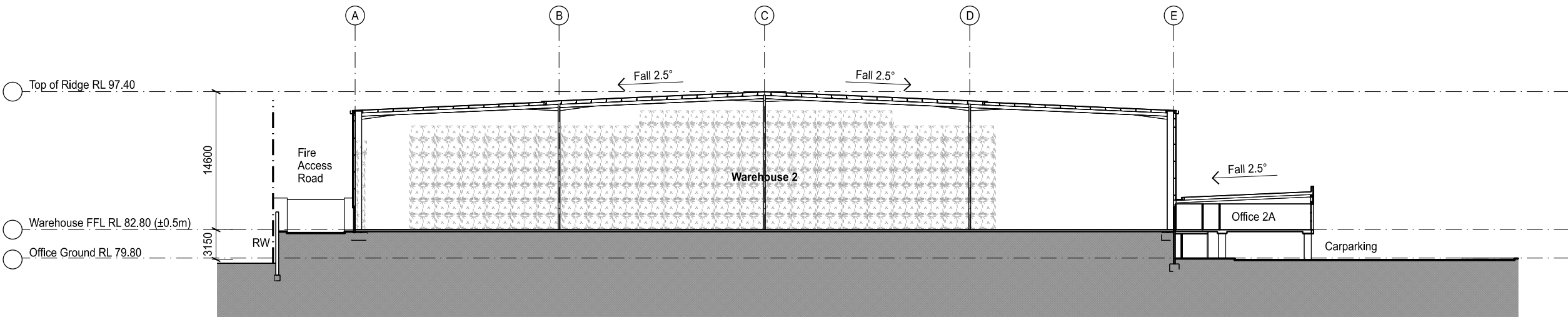


Indicative External Finishes Legend

- | | | | | | |
|---|---|---|--|--|--|
| ① Profile Metal Wall Cladding. Colour To Match Colorbond Monument | ⑤ Translucent Roof Sheetting / Cladding | ⑨ Aluminium Framed Glazing System In Black Powder Coat With Tone Clear Glass Or Similar | ⑬ Prefinished Metal Cladding, Grey. | ⑰ Hebel Panel Acoustic Barrier Between Steel Columns to Acoustic Engineer's Specifications | ⑳ Precast Concrete Panel. Sand Blasted Finish |
| ② Profile Metal Wall Cladding. Colour To Match Colorbond Shale Grey | ⑥ Downpipes Colorbond to match Colorbond 'shale grey' or 'cosmic' | ⑩ Spandrel Glazing, Charcoal/Black. | ⑭ Terracade Cladding, 'Gibson' | ⑱ Profiled Metal Wall Cladding. Colour to Match Colorbond 'Cosmic' | ⑲ Precast Concrete Panel. Paint Finish to Match Colorbond 'Cosmic' |
| ③ Precast Concrete Dado Panel. Natural Finish | ⑦ Eaves Gutter And Barge To Match Colorbond 'Shale Grey' | ⑪ Prefinished Metal Cladding, White. | ⑮ Metal Vertical Louvres, Black Finish | | |
| ④ Metal Roof Sheetting. Zincalume | ⑧ Metal Roller Shutter Door To Match Colorbond 'Cosmic' | ⑫ Prefinished Metal Cladding, Black. | ⑯ Prefinished Metal Window Hood, Black | | |

Notes

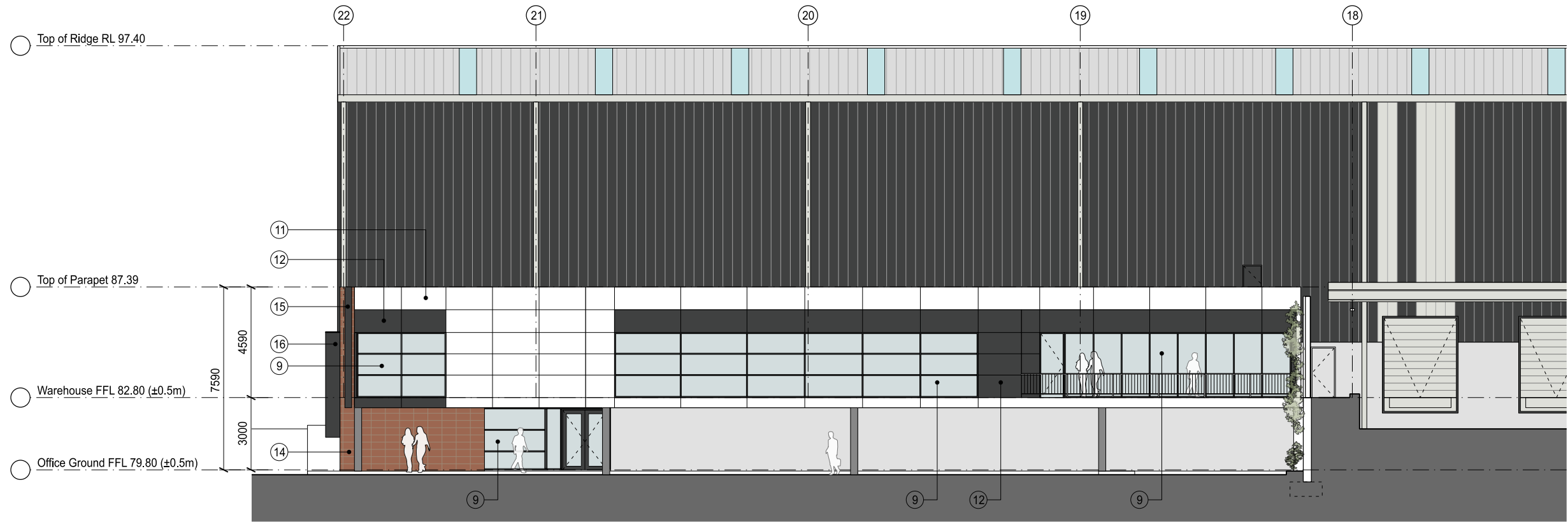
- 13m Height Plane (from proposed ground level)
- 13m Height Plane (from existing ground level)



01
DA211

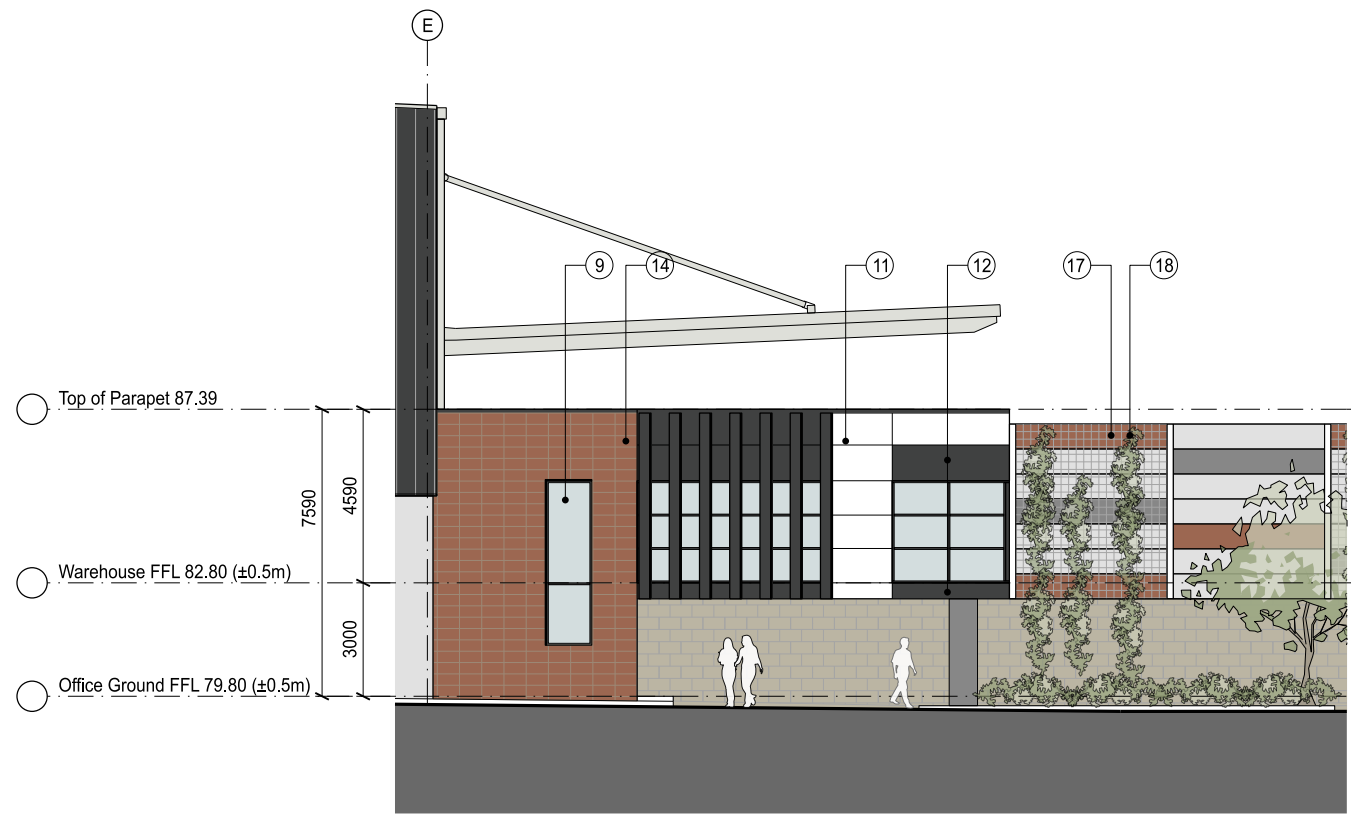
Section - Warehouse 2

1:500



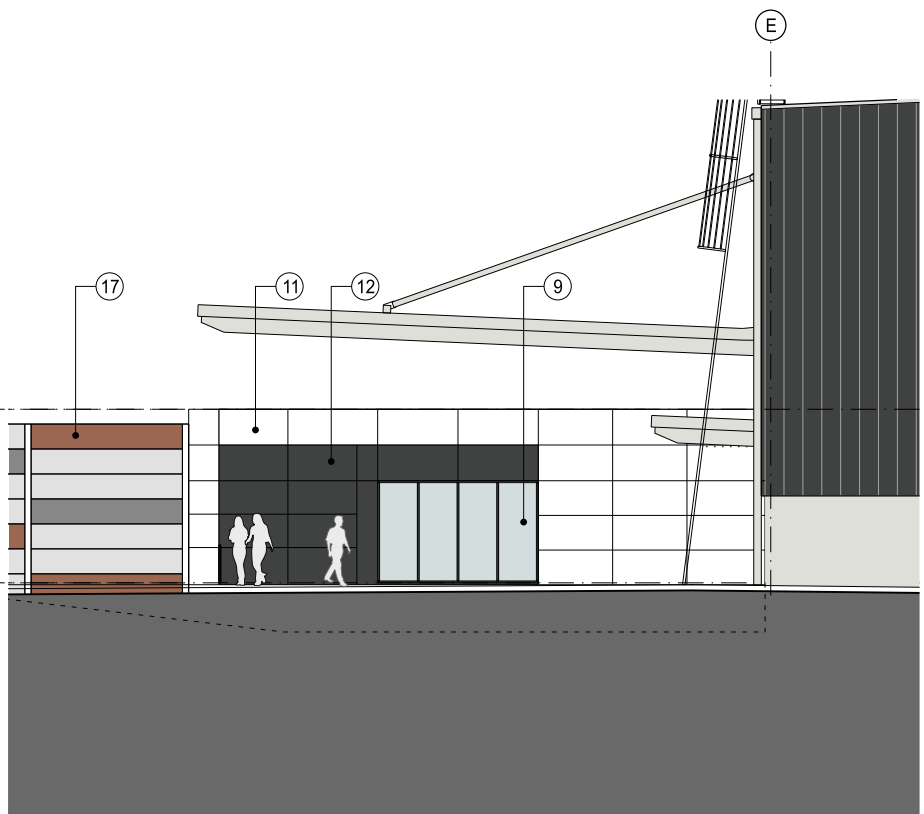
01 Office - North Elevation -

DA215



02 Office - East Elevation -

DA215

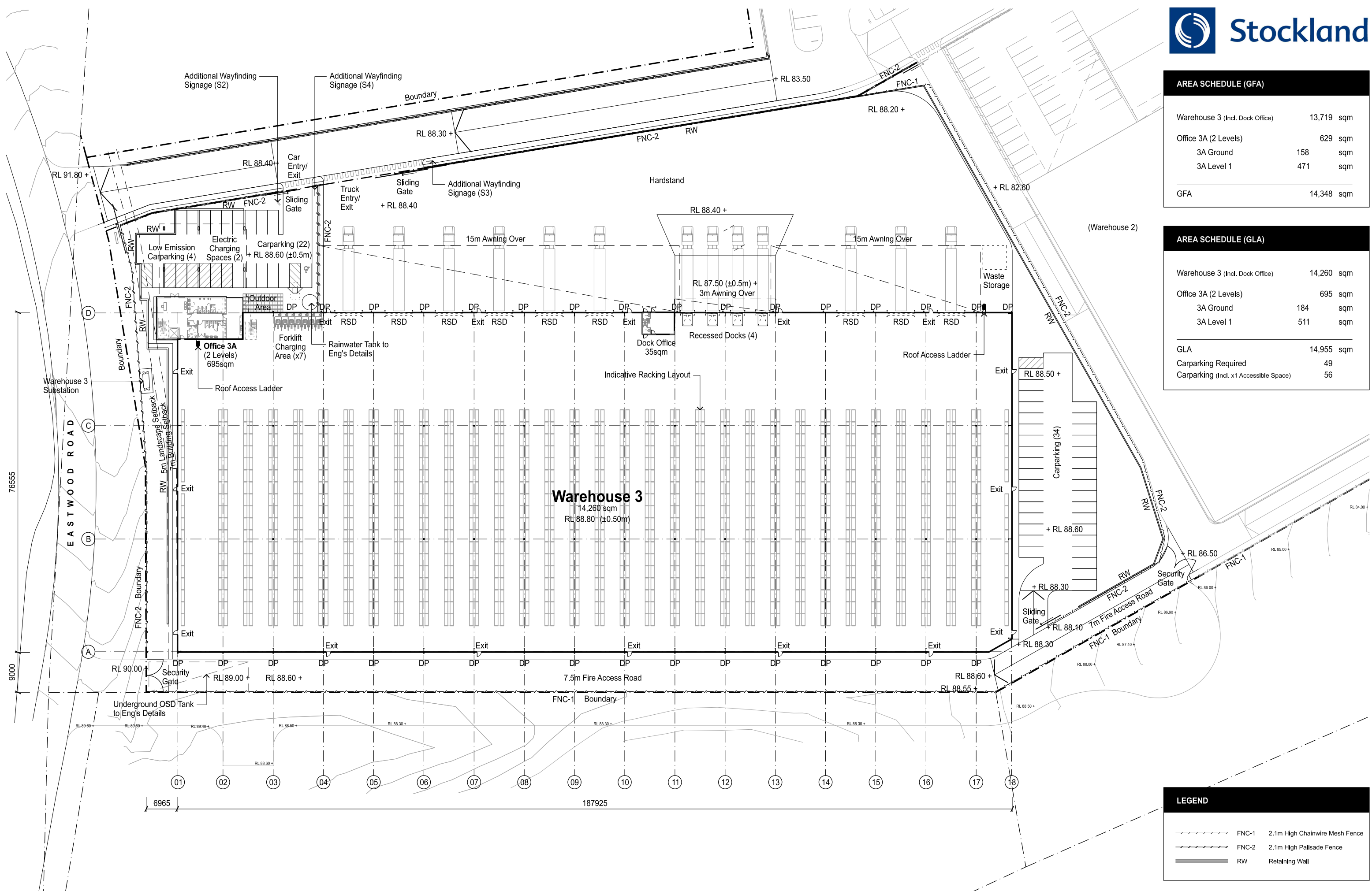


03 Office - West Elevation -

DA215

Indicative External Finishes Legend

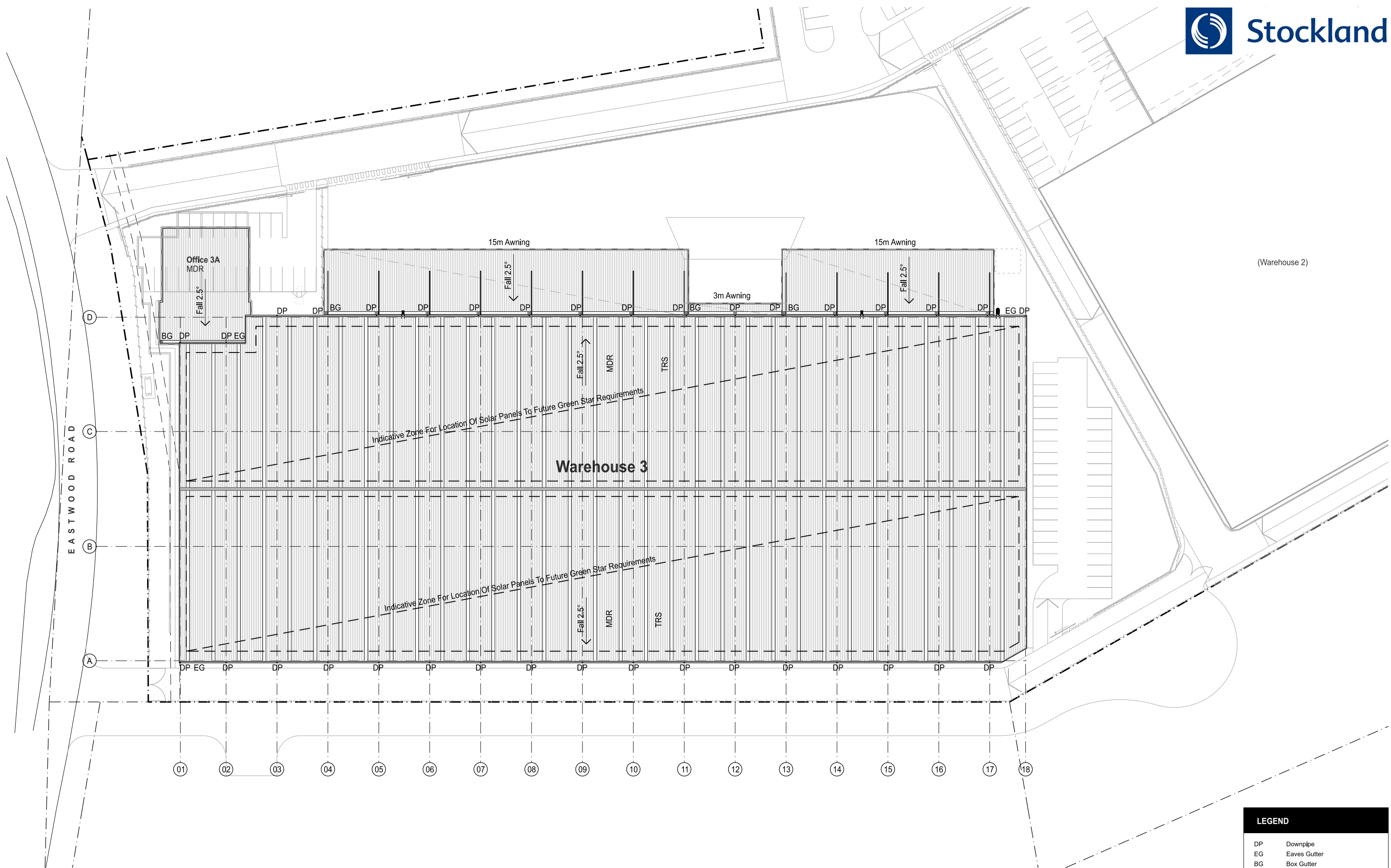
- 1 Profile Metal Wall Cladding. Colour To Match Colorbond Monument
- 2 Profile Metal Wall Cladding. Colour To Match Colorbond Shale Grey
- 3 Precast Concrete Dado Panel. Natural Finish
- 4 Metal Roof Sheeting. Zincalume
- 5 Translucent Roof Sheeting / Cladding
- 6 Downpipes Colorbond to match Colorbond 'shale grey' or 'cosmic'
- 7 Eaves Gutter And Barge To Match Colorbond 'Shale Grey'
- 8 Metal Roller Shutter Door To Match Colorbond 'Cosmic'
- 9 Aluminium Framed Glazing System In Black Powder Coat With Tone Clear Glass Or Similar
- 10 Spandrel Glazing, Charcoal/Black.
- 11 Prefinished Metal Cladding, White.
- 12 Prefinished Metal Cladding, Black.
- 13 Prefinished Metal Cladding, Grey.
- 14 Terracade Cladding, 'Gibson'
- 15 Metal Vertical Louvres, Black Finish
- 16 Prefinished Metal Window Hood, Black
- 17 Hebel Panel Acoustic Barrier Between Steel Columns to Acoustic Engineer's Specifications
- 18 Steel Mesh With Climbing Plants
- 19 Profiled Metal Wall Cladding. Colour to Match Colorbond 'Cosmic'
- 20 Precast Concrete Panel. Sand Blasted Finish
- 21 Precast Concrete Panel. Paint Finish to Match Colorbond 'Cosmic'



AREA SCHEDULE (GFA)		
Warehouse 3 (Incl. Dock Office)	13,719	sqm
Office 3A (2 Levels)	629	sqm
3A Ground	158	sqm
3A Level 1	471	sqm
GFA	14,348	sqm

AREA SCHEDULE (GLA)		
Warehouse 3 (Incl. Dock Office)	14,260	sqm
Office 3A (2 Levels)	695	sqm
3A Ground	184	sqm
3A Level 1	511	sqm
GLA	14,955	sqm
Carparking Required	49	
Carparking (Incl. x1 Accessible Space)	56	

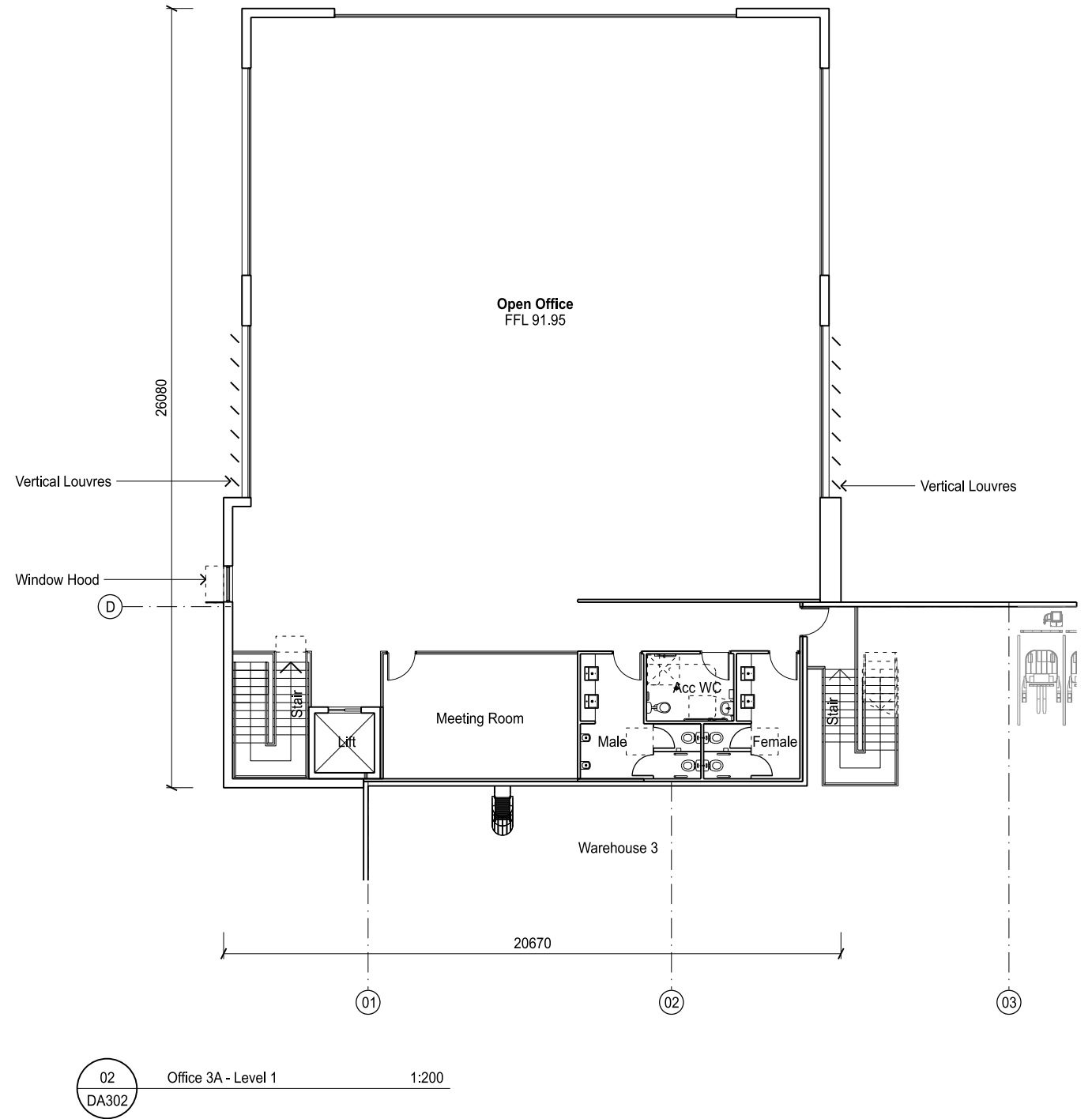
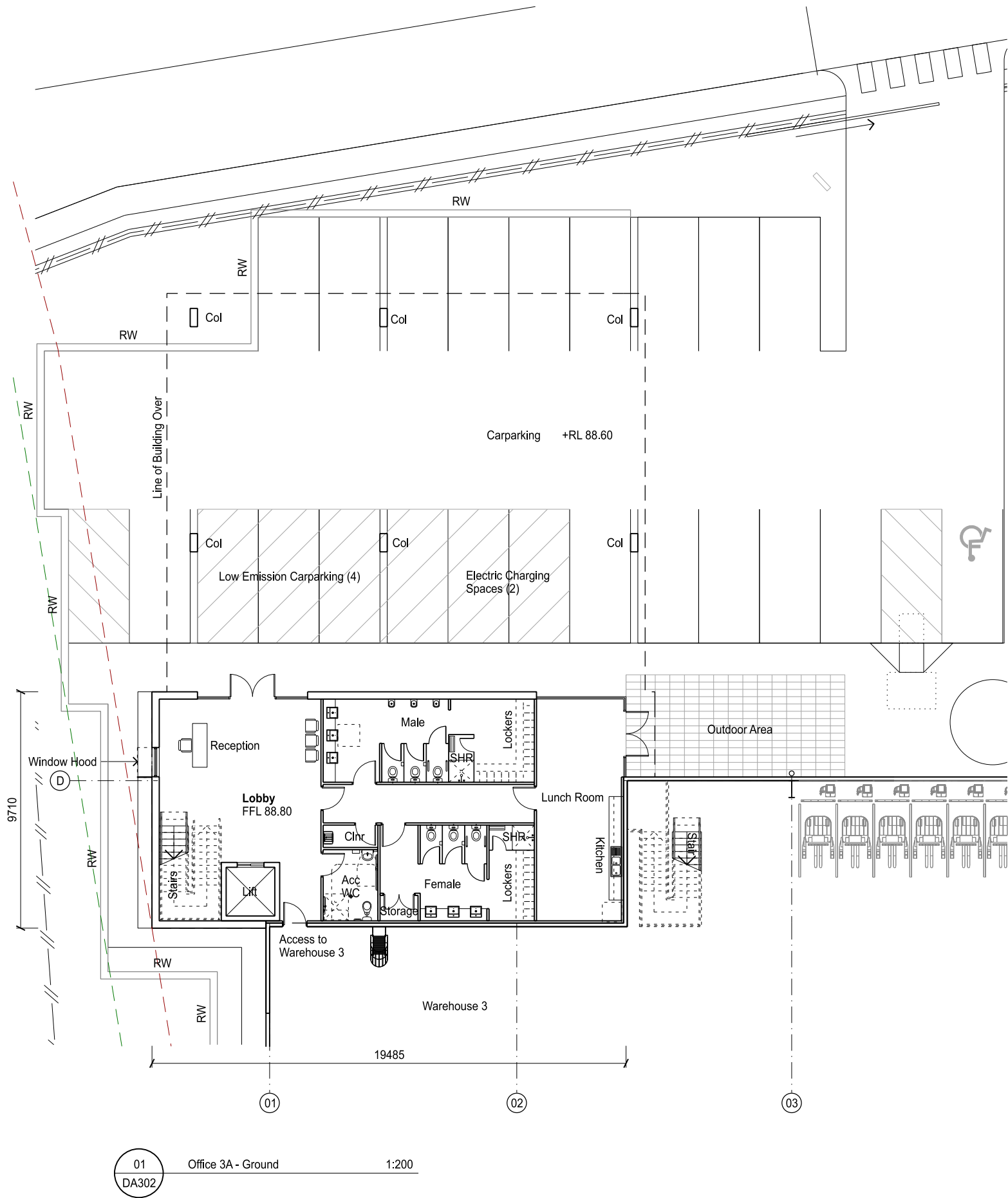
LEGEND		
	FNC-1	2.1m High Chainwire Mesh Fence
	FNC-2	2.1m High Palisade Fence
	RW	Retaining Wall

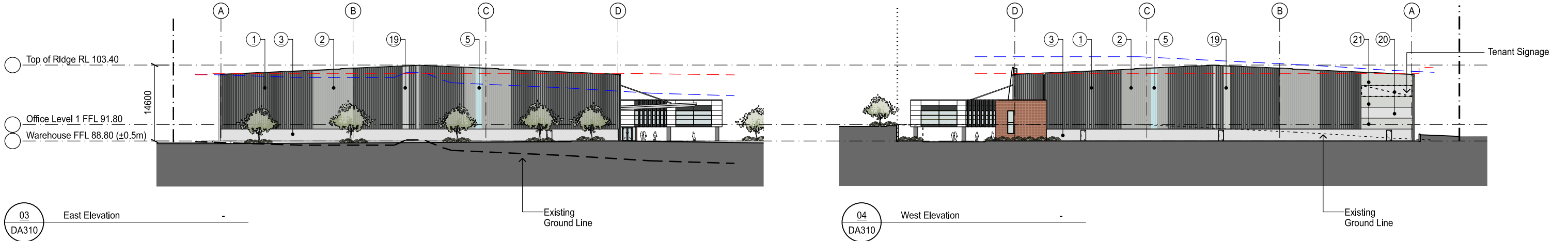
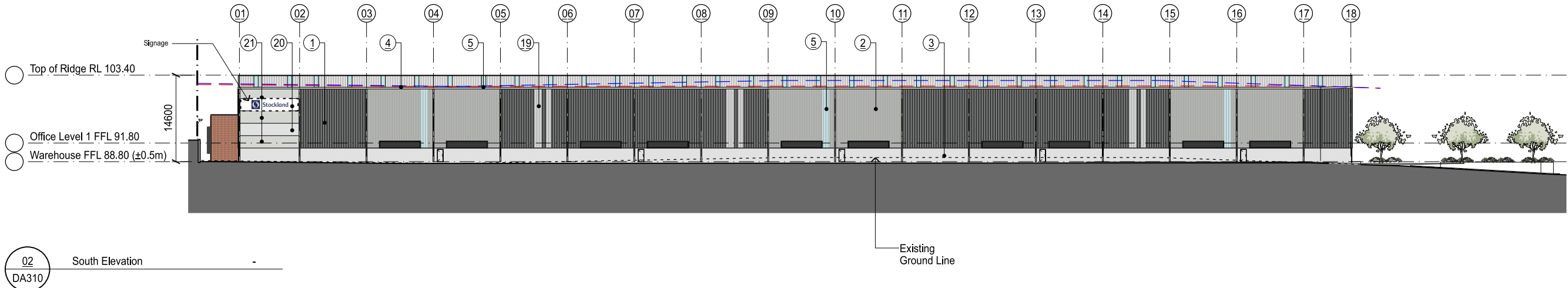


(Warehouse 2)

LEGEND

- DP Downpipe
- EG Eaves Gutter
- BG Box Gutter
- TRS Translucent Roof Sheet
- MDR Metal Deck Roof



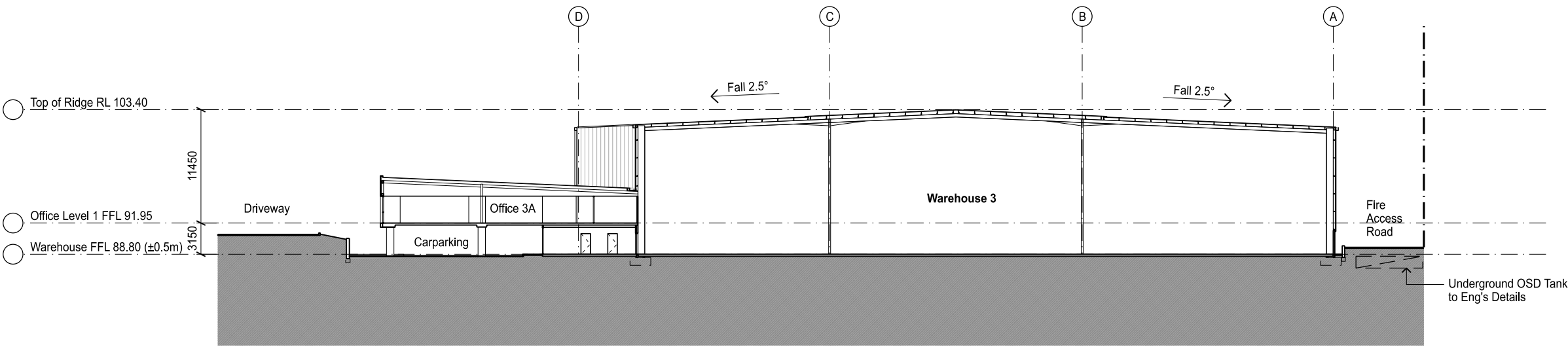


Indicative External Finishes Legend

- | | | | | | |
|---|---|---|---|---|---|
| 1 Profile Metal Wall Cladding. Colour To Match Colorbond Monument | 5 Translucent Roof Sheeting / Cladding | 9 Aluminium Framed Glazing System In Black Powder Coat With Tone Clear Glass Or Similar | 13 Prefinished Metal Cladding, Grey. | 17 Hebel Panel Acoustic Barrier Between Steel Columns to Acoustic Engineer's Specifications | 21 Precast Concrete Panel. Paint Finish to Match Colorbond 'Cosmic' |
| 2 Profile Metal Wall Cladding. Colour To Match Colorbond Shale Grey | 6 Downpipes Colorbond to match Colorbond 'shale grey' or 'cosmic' | 10 Spandrel Glazing, Charcoal/Black. | 14 Terracade Cladding, 'Gibson' | 18 Steel Mesh With Climbing Plants | |
| 3 Precast Concrete Dado Panel. Natural Finish | 7 Eaves Gutter And Barge To Match Colorbond 'Shale Grey' | 11 Prefinished Metal Cladding, White. | 15 Metal Vertical Louvres, Black Finish | 19 Profiled Metal Wall Cladding. Colour to Match Colorbond 'Cosmic' | |
| 4 Metal Roof Sheeting. Zincalume | 8 Metal Roller Shutter Door To Match Colorbond 'Cosmic' | 12 Prefinished Metal Cladding, Black. | 16 Prefinished Metal Window Hood, Black | 20 Precast Concrete Panel. Sand Blasted Finish | |

Notes

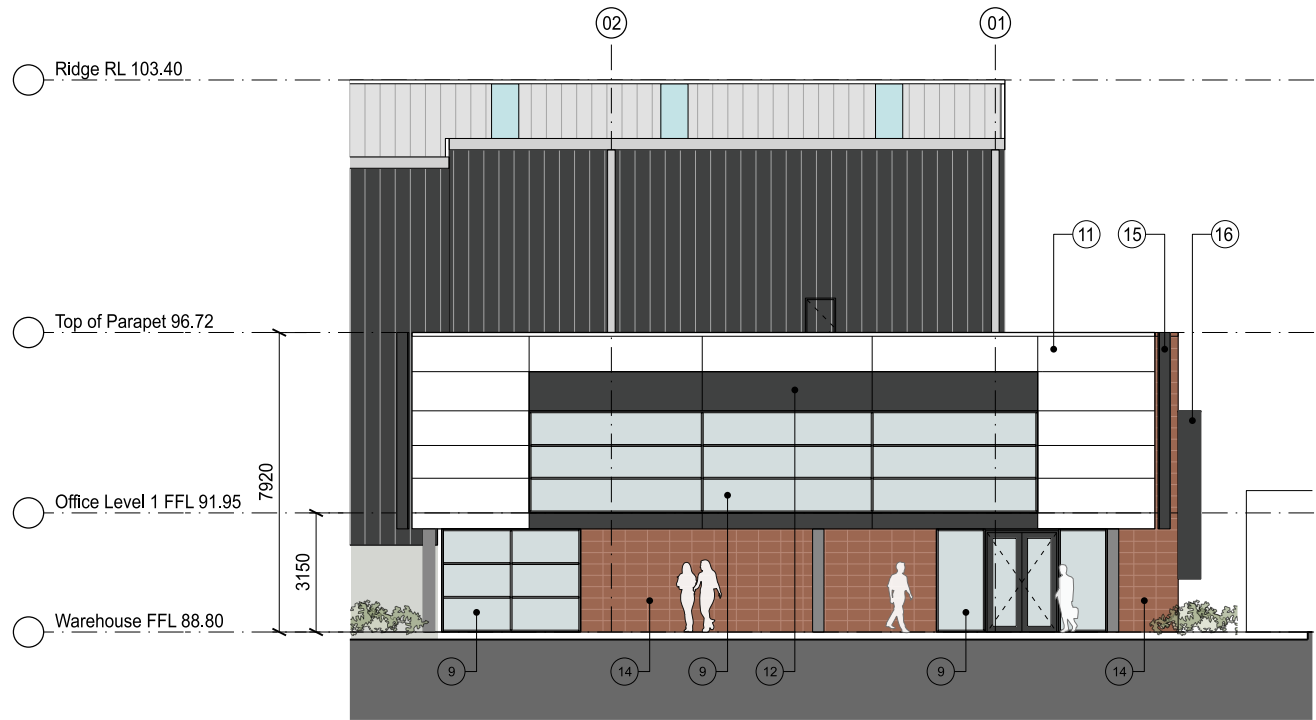
- 13m Height Plane (from proposed ground level)
- 13m Height Plane (from existing ground level)



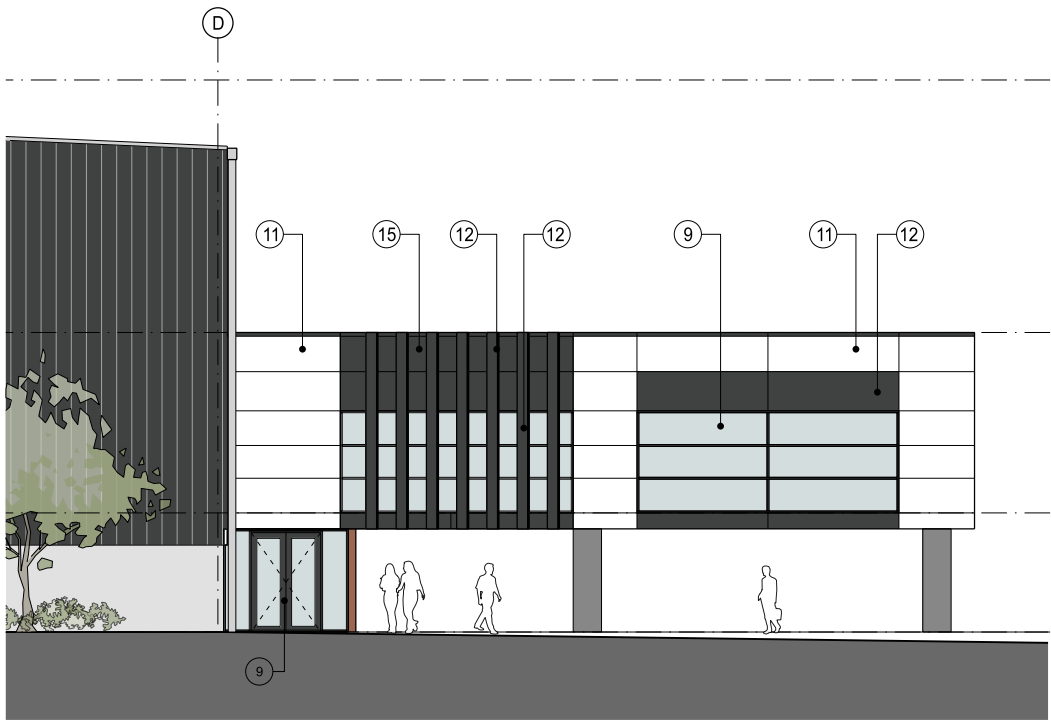
01
DA311

Section - Warehouse 3

-



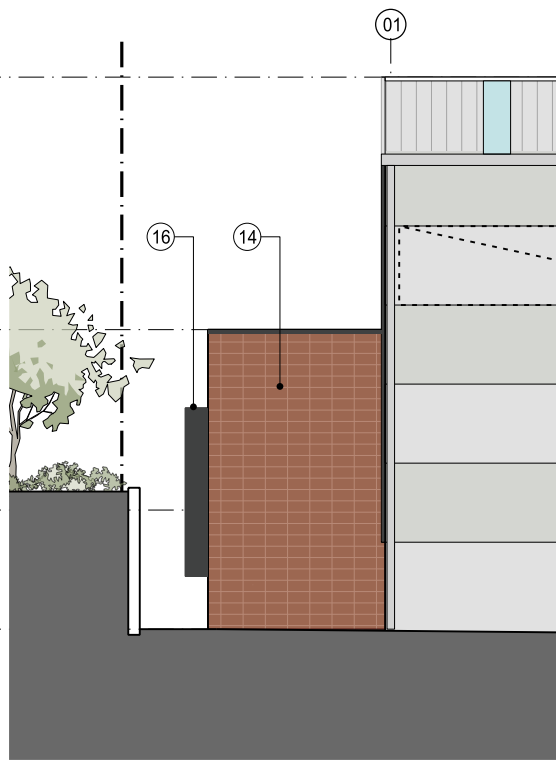
01 North Elevation
DA315



02 East Elevation
DA315



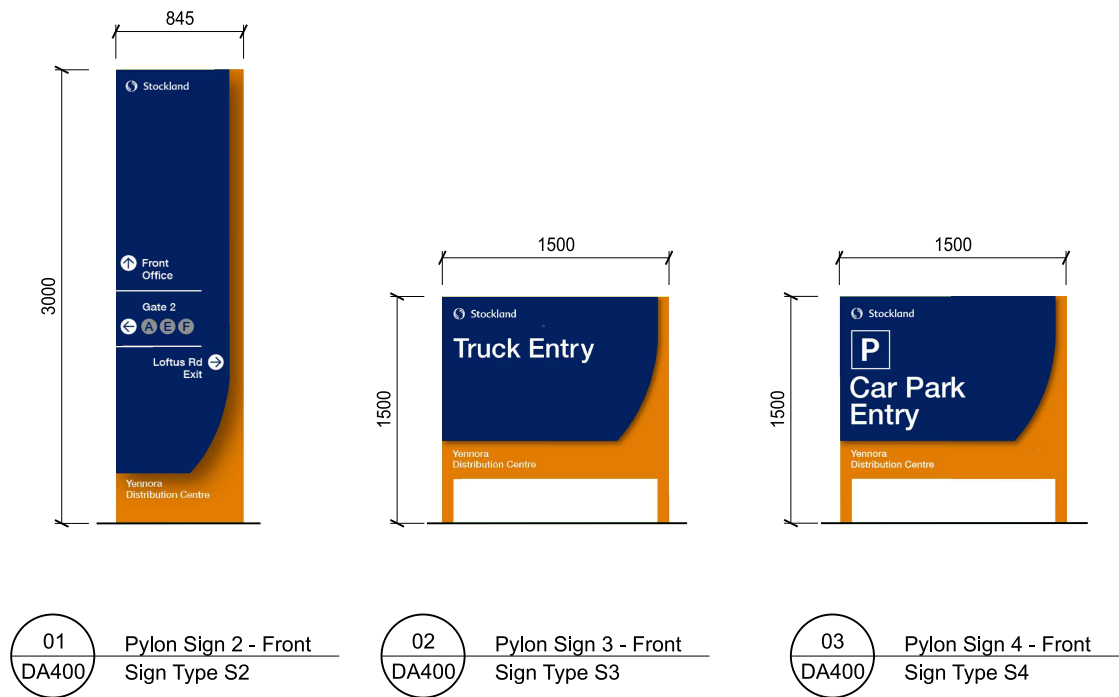
03 West Elevation
DA315



04 South Elevation
DA315

Indicative External Finishes Legend

- ① Profile Metal Wall Cladding, Colour To Match Colorbond Monument
- ② Profile Metal Wall Cladding, Colour To Match Colorbond Shale Grey
- ③ Precast Concrete Dado Panel, Natural Finish
- ④ Metal Roof Sheeting, Zincalume
- ⑤ Translucent Roof Sheeting / Cladding
- ⑥ Downpipes Colorbond to match Colorbond 'shale grey' or 'cosmic'
- ⑦ Eaves Gutter And Barge To Match Colorbond 'Shale Grey'
- ⑧ Metal Roller Shutter Door To Match Colorbond 'Cosmic'
- ⑨ Aluminium Framed Glazing System In Black Powder Coat With Tone Clear Glass Or Similar
- ⑩ Spandrel Glazing, Charcoal/Black.
- ⑪ Prefinished Metal Cladding, White.
- ⑫ Prefinished Metal Cladding, Black.
- ⑬ Prefinished Metal Cladding, Grey.
- ⑭ Terracade Cladding, 'Gibson'
- ⑮ Metal Vertical Louvres, Black Finish
- ⑯ Prefinished Metal Window Hood, Black
- ⑰ Hebel Panel Acoustic Barrier Between Steel Columns to Acoustic Engineer's Specifications
- ⑱ Steel Mesh With Climbing Plants
- ⑲ Profiled Metal Wall Cladding, Colour to Match Colorbond 'Cosmic'
- ⑳ Precast Concrete Panel, Sand Blasted Finish
- ㉑ Precast Concrete Panel, Paint Finish to Match Colorbond 'Cosmic'



Leppington Business Park Stage 2

345-367 Bringelly Road and 17 Eastwood Road, Leppington NSW
Landscape Development Application

© 2021 Site Image (NSW) Pty Ltd ABN 44 801 262 380 as agent for Site Image NSW Partnership. All rights reserved. This drawing is copyright and shall not be reproduced or copied in any form or by any means (graphic, electronic or mechanical including photocopy) without the written permission of Site Image (NSW) Pty Ltd Any license, expressed or implied, to use this document for any purpose what so ever is restricted to the terms of the written agreement between Site Image (NSW) Pty Ltd and the instructing party.

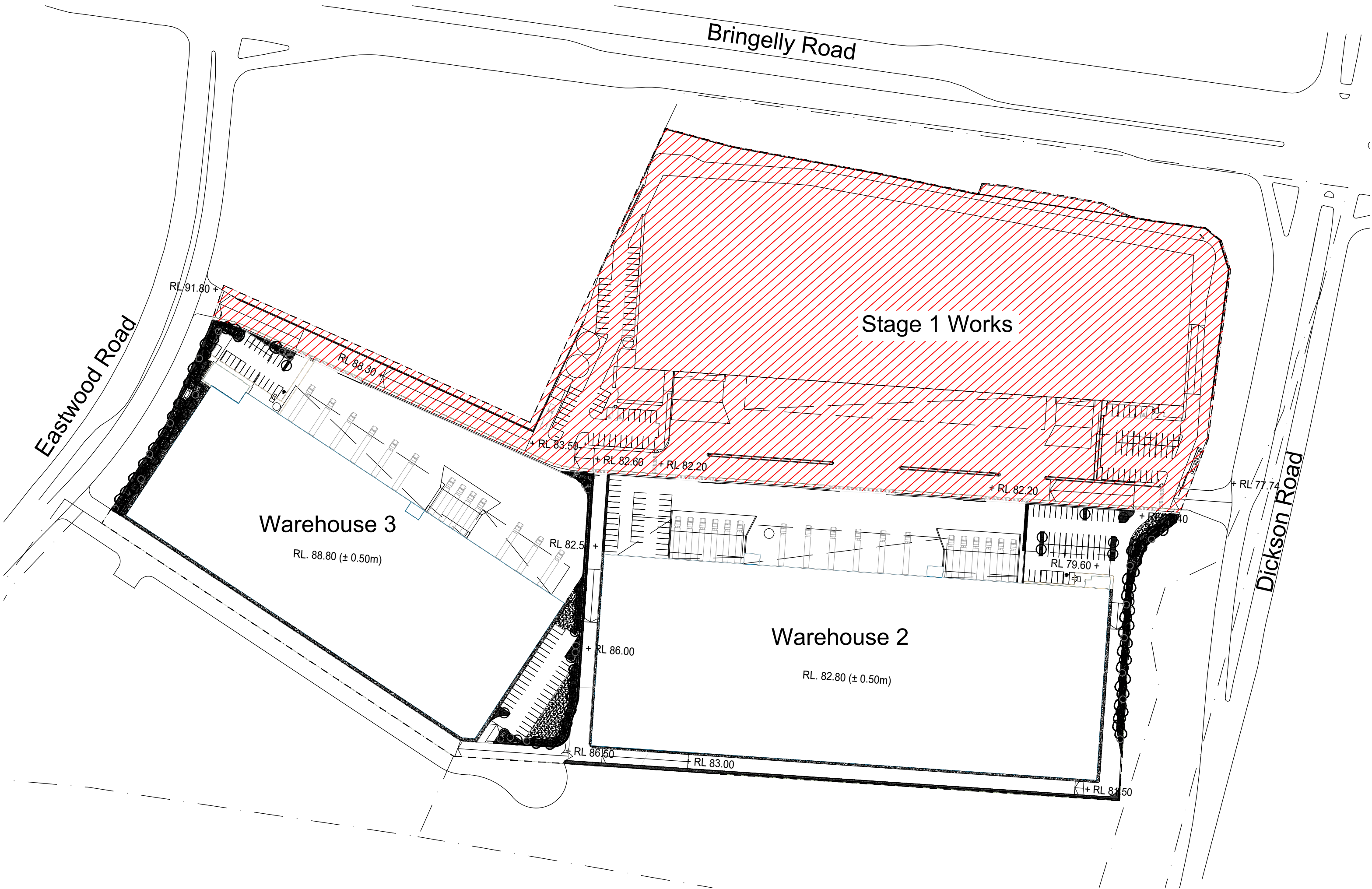
The contractor shall check and verify all work on site (including work by others) before commencing the landscape installation. Any discrepancies are to be reported to the Project Manager or Landscape Architect prior to commencing work. Do not scale this drawing. Any required dimensions not shown shall be referred to the Landscape Architect for confirmation.

Drawing Schedule

Drawing Number	Drawing Title	Scale
000	Landscape Coversheet	N/A
001	Landscape Masterplan	1:900
101	Landscape Plan - Warehouse 3	1:250
102	Landscape Plan - Warehouse 3	1:250
103	Landscape Plan - Warehouse 2	1:250
104	Landscape Plan - Warehouse 2	1:250
501	Landscape Details	As Shown

A	For Comment	JW	NM	21.10.2021
Issue	Revision Description	Drawn	Check	Date

Legend



Site Plan | 1:1500

Key Plan

Client
Stockland

Project
Leppington Business Park Stage 2
345-367 Bringelly Road and
17 Eastwood Road, Leppington NSW

S I T E I M A G E
Level 1, 3-5 Baptist Street
Redfern NSW 2016
Australia
Tel: (61 2) 8332 5600
Fax: (61 2) 9698 2877
www.siteimage.com.au
Site Image (NSW) Pty Ltd
ABN 44 801 262 380
Landscape Architects

PRELIMINARY

Drawing Name
Landscape Coversheet

Scale	Drawing Number	Issue
Job Number	SS21-4824	000 A

NOT FOR CONSTRUCTION

The contractor shall check and verify all work on site (including work by others) before commencing the landscape installation. Any discrepancies are to be reported to the Project Manager or Landscape Architect prior to commencing work. Do not scale this drawing. Any required dimensions not shown shall be referred to the Landscape Architect for confirmation.

A	For Comment	JW	NM	21.10.2021
Issue	Revision Description	Drawn	Check	Date

- Legend
- Site Boundary
 - Stage 1 Works
 - Proposed Trees
 - Proposed Shrubs and Accents
 - Proposed Grasses and Groundcovers
 - Turf
 - Hard Garden Edging

Key Plan

Client
Stockland

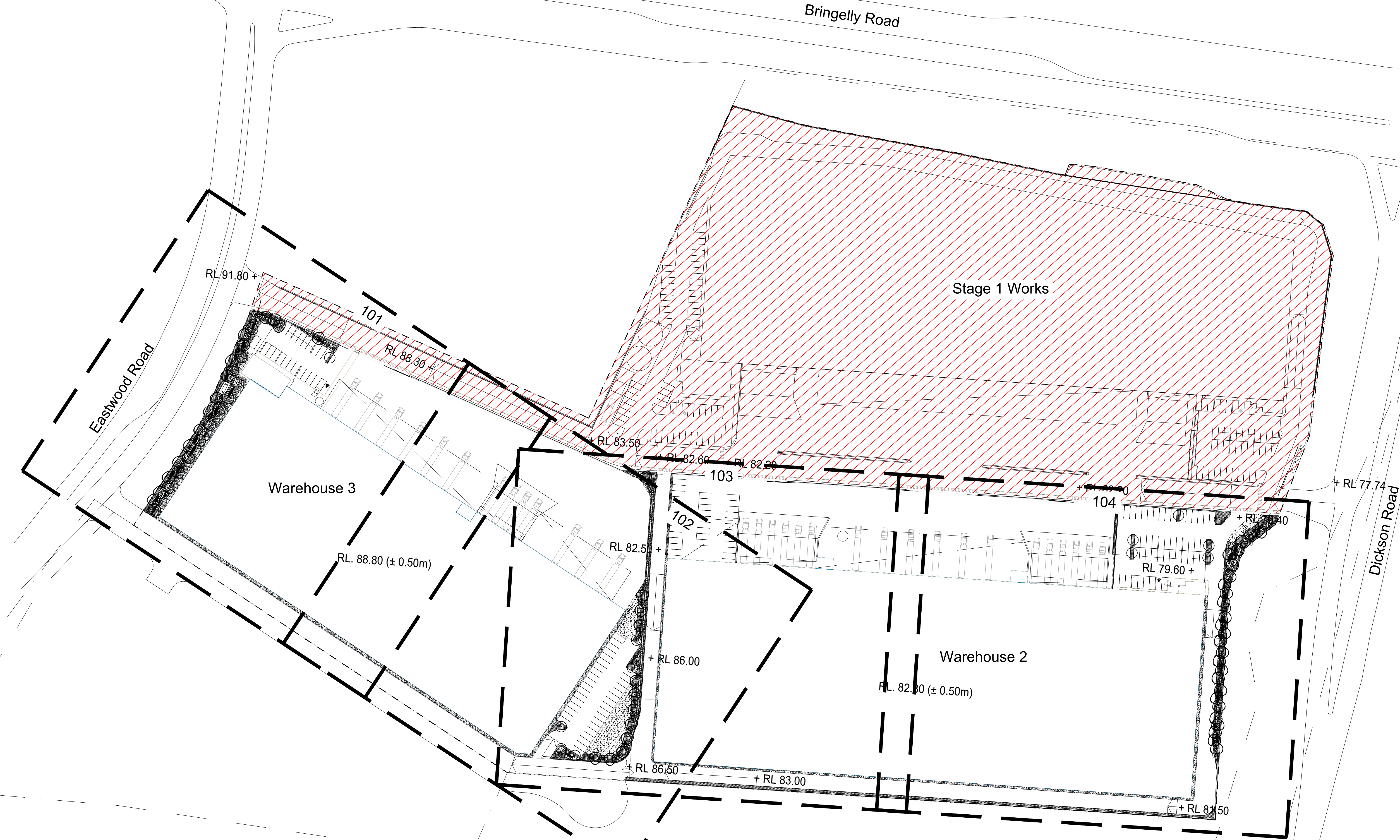
Project
Leppington Business Park Stage 2
345-367 Bringelly Road and
17 Eastwood Road, Leppington NSW

SITE IMAGE
Level 1, 3-5 Baptist Street
Redfern NSW 2016
Australia
Tel: (61 2) 8332 5600
Fax: (61 2) 9698 2877
www.siteimage.com.au
Site Image (NSW) Pty Ltd
ABN 44 801 262 380
Landscape Architects

PRELIMINARY

Drawing Name
Landscape Masterplan

Scale
Job Number
Drawing Number
Issue
SS21-4824
001 A



NOT FOR CONSTRUCTION

The contractor shall check and verify all work on site (including work by others) before commencing the landscape installation. Any discrepancies are to be reported to the Project Manager or Landscape Architect prior to commencing work. Do not scale this drawing. Any required dimensions not shown shall be referred to the Landscape Architect for confirmation.

Legend

Key Plan

SITE IMAGE



01 A

01 A

RL 88.30 +

For continuation refer 102

RL. 88.80 ($\pm 0.50\text{m}$)

NOT FOR CONSTRUCTION

A1



NOT FOR CONSTRUCTION

© 2021 Site Image (NSW) Pty Ltd ABN 44 801 262 380 as agent for Site Image NSW Partnership. All rights reserved. This drawing is copyright and shall not be reproduced or copied in any form or by any means (graphic, electronic or mechanical including photocopy) without the written permission of Site Image (NSW) Pty Ltd Any license, expressed or implied, to use this document for any purpose what so ever is restricted to the terms of the written agreement between Site Image (NSW) Pty Ltd and the instructing party.

The contractor shall check and verify all work on site (including work by others) before commencing the landscape installation. Any discrepancies are to be reported to the Project Manager or Landscape Architect prior to commencing work. Do not scale this drawing. Any required dimensions not shown shall be referred to the Landscape Architect for confirmation.

A	For Comment	JW	NM	21.10.2021
Issue	Revision Description	Drawn	Check	Date

- Legend
- Site Boundary
 - Stage 1 Works
 - Proposed Trees
 - Proposed Shrubs and Accents
 - Proposed Grasses and Groundcovers
 - Turf
 - Hard Garden Edging

Key Plan

Client
Stockland

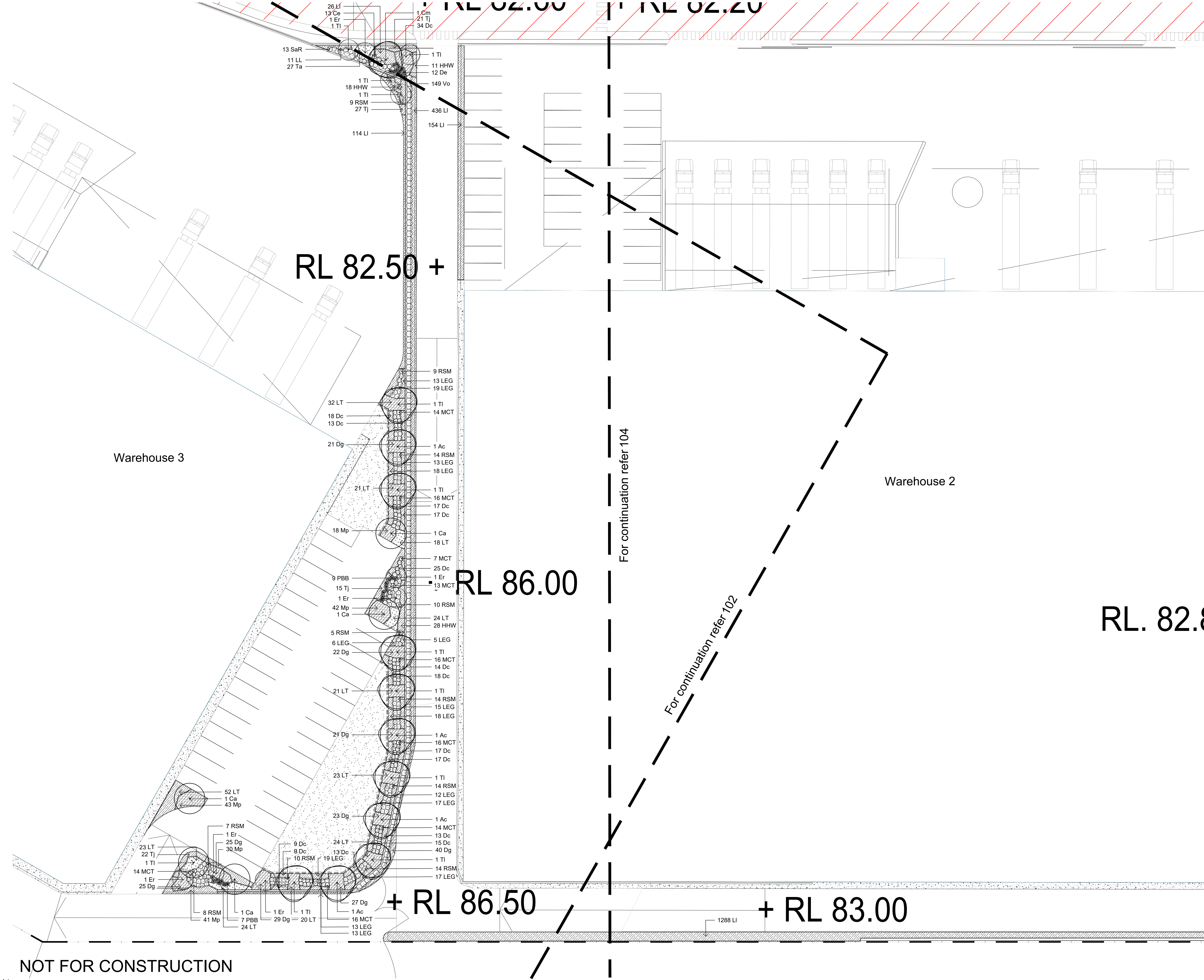
Project
Leppington Business Park Stage 2
345-367 Bringelly Road and
17 Eastwood Road, Leppington NSW

SITE IMAGE
Level 1, 3-5 Baptist Street
Redfern NSW 2016
Australia
Tel: (61 2) 8332 5600
Fax: (61 2) 9698 2877
www.siteimage.com.au
Site Image (NSW) Pty Ltd
ABN 44 801 262 380



PRELIMINARY

Drawing Name
Landscape Plan
Warehouse 3
Scale 1:250 @ A1
Job Number
SS21-4824
Drawing Number
102
Issue
A



© 2021 Site Image (NSW) Pty Ltd ABN 44 801 262 380 as agent for Site Image NSW Partnership. All rights reserved. This drawing is copyright and shall not be reproduced or copied in any form or by any means (graphic, electronic or mechanical including photocopy) without the written permission of Site Image (NSW) Pty Ltd. Any license, expressed or implied, to use this document for any purpose what so ever is restricted to the terms of the written agreement between Site Image (NSW) Pty Ltd and the instructing party.

The contractor shall check and verify all work on site (including work by others) before commencing the landscape installation. Any discrepancies are to be reported to the Project Manager or Landscape Architect prior to commencing work. Do not scale this drawing. Any required dimensions not shown shall be referred to the Landscape Architect for confirmation.

A	For Comment	JW	NM	21.10.2021
Issue	Revision Description	Drawn	Check	Date

- Legend
- Site Boundary
 - Stage 1 Works
 - Proposed Trees
 - Proposed Shrubs and Accents
 - Proposed Grasses and Groundcovers
 - Turf
 - Hard Garden Edging

Key Plan

Client
Stockland

Project
Leppington Business Park Stage 2
345-367 Bringelly Road and
17 Eastwood Road, Leppington NSW

SITE IMAGE
Level 1, 3-5 Baptist Street
Redfern NSW 2016
Australia
Tel: (61 2) 8332 5600
Fax: (61 2) 9698 2877
www.siteimage.com.au
Site Image (NSW) Pty Ltd
ABN 44 801 262 380

PRELIMINARY

Drawing Name
Landscape Plan
Warehouse 2

Scale 1:250 @ A1
Job Number
Drawing Number
Issue

SS21-4824 103 A

RL 79.4

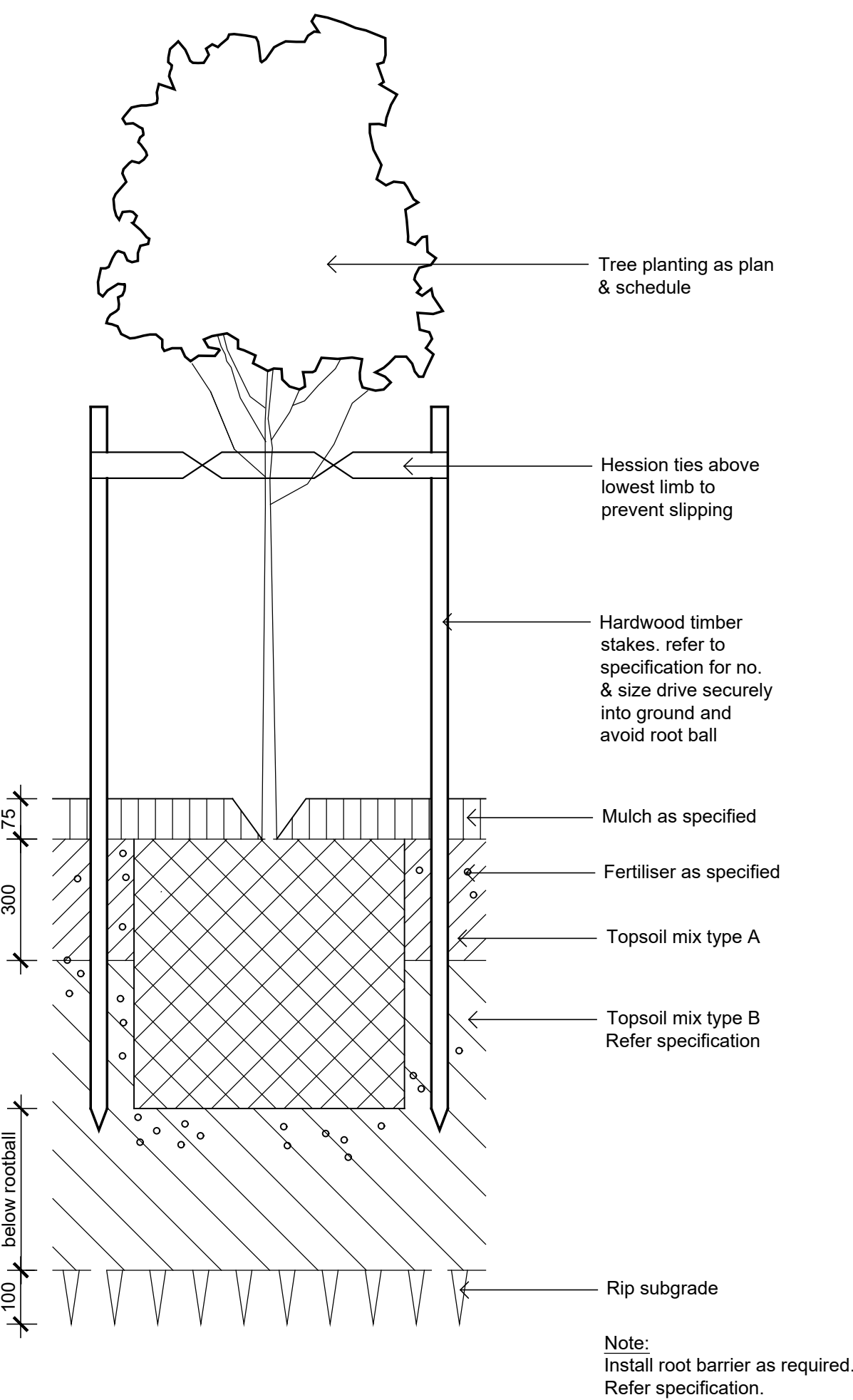
+ RL 81.50

SS21-4824 104 A

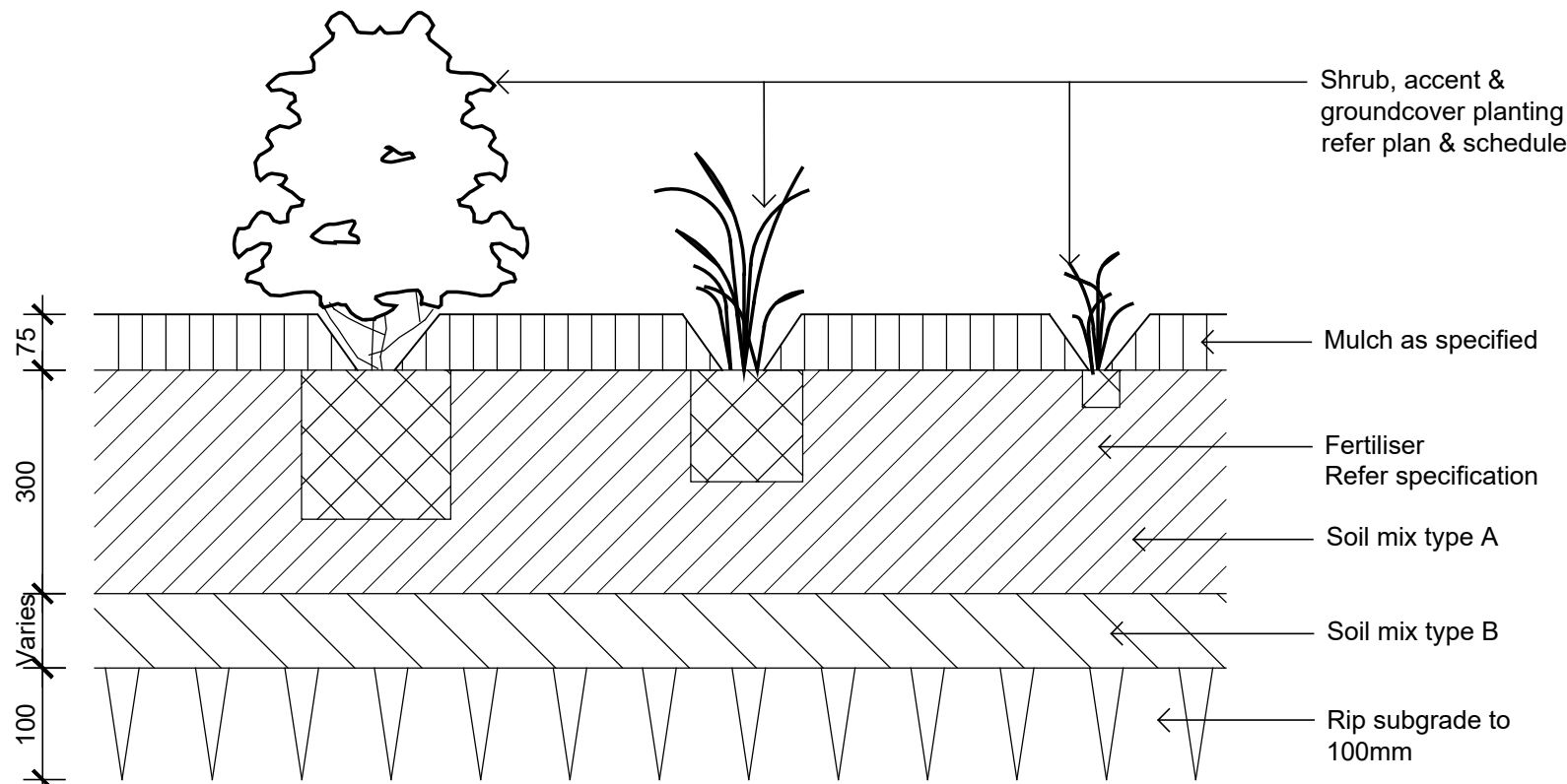
PL. 82.80 ($\pm 0.50\text{m}$)

Warehouse 2

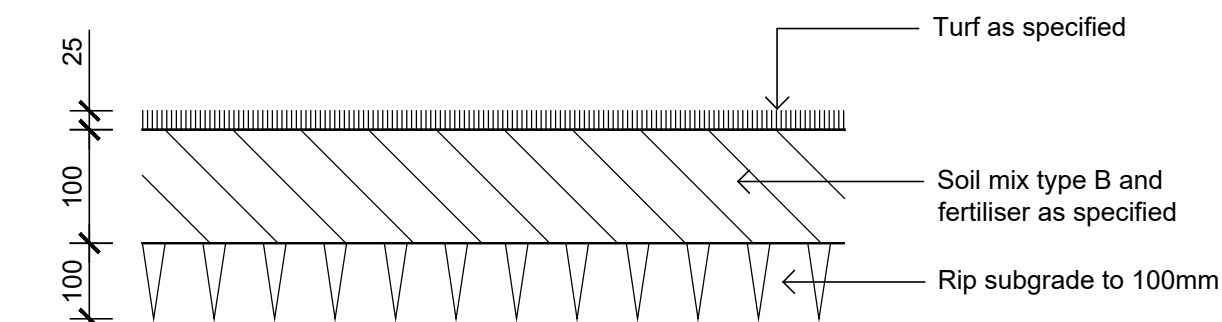
NOT FOR CONSTRUCTION



Detail 75-200L Tree Planting on Grade
1:10



Detail Shrub Accent & Groundcover Planting on Grade
1:10



Detail Turf on Even Grade
1:10

PLANT SCHEDULE

	Botanic Name	Common Name	Mature Size	Density	Pot Size	Qty
GROUND FLOOR						
TREES						
Ac	Angophora costata	Sydney Red Gum	15 x 8	1/10sqm	100L	22
CS	Callistemon salignus	White Bottlebrush	9 x 5	1/5sqm	75L	6
Cv	Callistemon viminalis	Weeping Bottlebrush	8 x 5	1/5sqm	75L	9
Cm	Corymbia maculata	Spotted Gum	12 x 5	1/10sqm	100L	20
Ca	Cupaniopsis anacardioides	Tuckeroo	7 x 5	1/5sqm	100L	11
Er	Elaeocarpus reticulatus	Blueberry Ash	8 x 4	1/5sqm	100L	9
Ec	Eucalyptus crebra	Narrow Leafed Red Ironbark	15 x 8	1/10sqm	100L	17
TI	Tristaniopsis laurina	Water Gum	10 x 8	1/5sqm	100L	14
SHRUBS & ACCENTS						
AcL	Acacia cognata 'Limelight'	River Wattle	1 x 1.2	1/1.5sqm	140mm	77
AsM	Acmena smithii 'Minor'	Lillypilly	3 x 2	1/2.5sqm	140mm	133
BBC	Banksia spinulosa 'Birthday Candles'	Birthday Candles	0.5 x 0.8	1/1.5sqm	140mm	90
By	Beschoemia yuccoides	Mexican Lily	2 x 2	1/2.5sqm	140mm	79
CE	Callistemon 'Endeavour'	Callistemon Endeavour	2 x 2	1/2.5sqm	140mm	103
CLJ	Callistemon 'Little John'	Dwarf Bottlebrush	1 x 1	1/1.5sqm	200mm	118
De	Doryanthes excelsa	Gymea Lily	2 x 2	1/2.5sqm	140mm	223
GRG	Grevillea 'Robyn Gordon'	Robyn Gordon	1.5 x 2	1/1.5sqm	140mm	154
MCT	Melaleuca linariifolia 'Claret Tops'	Honey Myrtle	1 x 1	1/1.5sqm	200mm	126
PBB	Phomium 'Bronze Baby'	NZ Flax	.6 x .5	1/1.5sqm	140mm	107
PRR	Photinia 'Red Robin'	Red Robin	3 x 2	1/2.5sqm	140mm	17
RSM	Rhaphiolepis 'Snow Maiden'		.75 x .5	1/1.5sqm	140mm	114
SaR	Syzygium australe 'Resilience'	Lilly Pilly	5 x 3	1/2.5sqm	140mm	23
Vo	Viburnum odoratissimum	Viburnum	3 x 3	1/2.5sqm	140mm	149
GRASSES & GROUND COVERS						
Dc	Dianella caerulea	Blue Flax Lily	0.75 x 0.75	1/0.2sqm	50mm	614
Dg	Diets grandiflora	Wild Iris	.6 x .6	1/0.2sqm	50mm	306
HHW	Hardenbergia 'Happy Wanderer'	Hardenbergia 'Happy Wanderer'	1.8-2.5 x 0.45-1.0	1/0.2sqm	50mm	447
LEG	Liriope muscari 'Evergreen Giant'	Liriope	0.5 x 0.5	1/0.2sqm	50mm	198
LI	Lomandra longifolia	Mat Rush	0.75 x 1	1/0.2sqm	50mm	2697
LT	Lomandra longifolia 'Tanika'	Tanika Matrush	0.65 x 0.65	1/0.2sqm	50mm	777
Mp	Myoporum parvifolium	Creeping Boobialla	0.2 x 1.5	1/0.2sqm	50mm	840
Ta	Themeda australis	Kangaroo Grass	1 x 0.3	1/0.2sqm	50mm	352
TJ	Trachelospermum jasminoides	Star Jasmine	.2 x 1	1/0.2sqm	50mm	639

© 2021 Site Image (NSW) Pty Ltd ABN 44 801 262 380 as agent for Site Image NSW Partnership. All rights reserved. This drawing is copyright and shall not be reproduced or copied in any form or by any means (graphic, electronic or mechanical including photocopy) without the written permission of Site Image (NSW) Pty Ltd Any license, expressed or implied, to use this document for any purpose what so ever is restricted to the terms of the written agreement between Site Image (NSW) Pty Ltd and the instructing party.

The contractor shall check and verify all work on site (including work by others) before commencing the landscape installation. Any discrepancies are to be reported to the Project Manager or Landscape Architect prior to commencing work. Do not scale this drawing. Any required dimensions not shown shall be referred to the Landscape Architect for confirmation.

A	For Comment	JW	NM	21.10.2021
Issue	Revision Description	Drawn	Check	Date

Client

Stockland

Project

Leppington Business Park Stage 2
345-367 Bringelly Road and
17 Eastwood Road, Leppington NSW

S I T E I M A G E
Level 1, 3-5 Baptist Street
Redfern NSW 2016
Australia
Tel: (61 2) 8332 5600
Fax: (61 2) 9698 2877
www.siteimage.com.au
Site Image (NSW) Pty Ltd
ABN 44 801 262 380



PRELIMINARY

Drawing Name

Landscape Details

Scale	Drawing Number	Issue
Job Number		

SS21-4824

501 A